



# STEAM BOILER **GE**

## ELECTRIC



**GE Series:** electric steam generator which combines the advantages of the steam produced in large boilers with the cleanliness and small size of electric units.

Suitable for small consumptions

Heating by encapsulated and submerged low-charge ohmic resistors.

Steam rates from 23 Kg/h (15 kW) to 4.600 Kg/h (3.300 kW).



**GE-250**

**It's main advantages are:**

- ⌚ Thanks to the experience gained over more than 60 years as well as to the continued research and development, the GE boiler, as a consequence of its insulation of great thickness and high density has **extremely low radiation losses**.
- ⌚ **Optimum accessibility for maintenance and overhaul**, due to the removable inspection box and removable panels.
- ⌚ **High steam rate and quality** thanks to the steam chamber's considerable volume and height, in addition to the incorporated droplet separator.
- ⌚ Low charge ohmic resistances made out of stainless steel, encapsulated and plated, completely submerged, make the GE a steam generator with an **excellent heat transfer**.



**CONTROL PANEL GE-1000**



**GE-20 – TRANSPORTABLE MODULE**

- ⌚ The boiler is perfectly thermally insulated with a layer of mineral wool and coated in painted mild steel or stainless steel sheet to minimize radiation losses.
- ⌚ **Scaling of power outputs from 1 to 10 or more stages** makes the GE boiler flexible and modulating source of steam supply.
- ⌚ The body and heads assembly is done with electrically welded joints, according to approved procedure. Quality control nondestructive examination of welding according to the design code requirements.



**SKID MOUNTED GE-4600**



- ⌘ Upon request, the GE boiler can be supplied with an **ATTSUTROL electric control cabinet** with built in automation. Twenty-four or seventy-two hour operation without permanent supervision according to TRD-604.
- ⌘ GE boiler, thanks to its **single startup control, impact indicators, automatic locking against improper operation and a panel labeled with summarized maintenance instructions** makes it very reliable and comprehensible to the boiler operator.
- ⌘ Stainless steel BFW pump, level gauge and valves with appropriate quality according to the operating conditions.
- ⌘ Boiler design and construction follow the rules of TRD code and the European PED 97/23/CE.
- ⌘ Design and construction according to **ASME, BS, DNV, GOST, JIS** and others, on customer's request.



**GE-2000 - RESSURE BODY MANUFACTURING**



**GE-4600 – HEATING RESISTANCES CONNECTION  
(3 MW ELECTRIC POWER RATE)**



**RESISTANCES ASSEMBLY USING A HYDRAULIC TORQUE WRENCH**

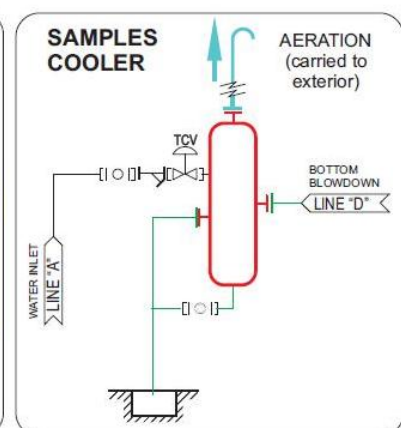
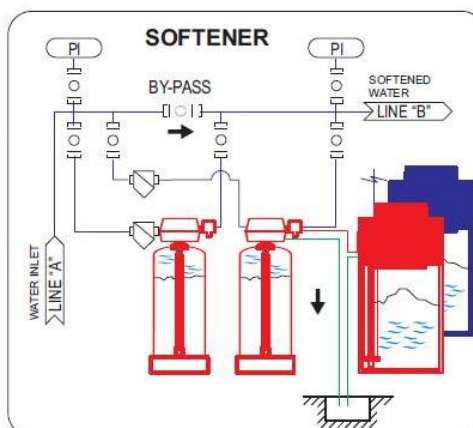
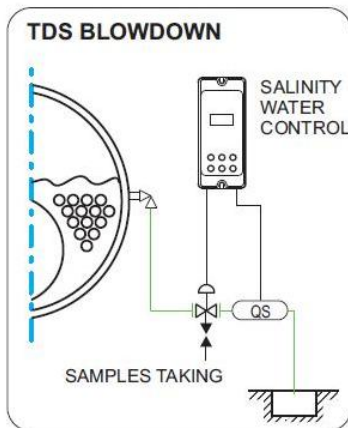
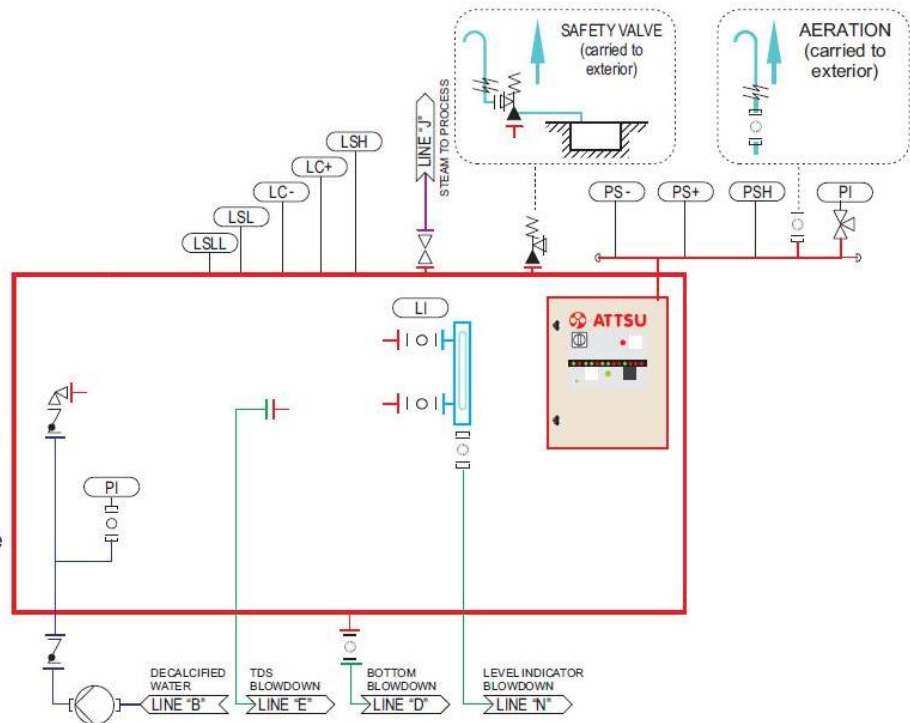




**GE-2400 WITH SUPERHEATER – IN THE PROCESS OF MANUFACTURE**

# installation diagram

- LC- : Low water safety level
- LC+ : Working water level
- LI : Level indicator
- LS : Scope of supply
- LSH : High water safety level
- LSL : 1st minimum level of safety
- LSLL : 2nd minimum level of safety
- PI : Pressure gauge
- PS- : Operation pressure at maximum power
- PS+ : Maximum operation pressure
- PSH : Maximum safety pressure
- PSL : Minimum fuel pressure
- QS : Salinity water control
- TCV : Thermostatic valve





## other boilers



Thermal oil boilers  
up to  
10.000.000 kcal/h  
(11600 kW) series FT



Steam boiler  
up to 20000 kg/h, series HH



Cogeneration boilers, with  
economizer, to produce steam,  
heated or superheated water,  
thermal oil, series BV



Biomass boilers to produce  
steam, heated or superheated  
water, thermal oil, series CS

Electric  
thermal oil  
boilers up to  
400°C  
and 40 bar,  
for ATEX  
environments,  
series FTE-Atex



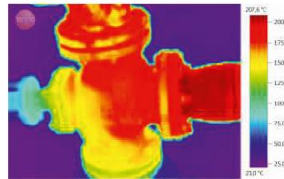
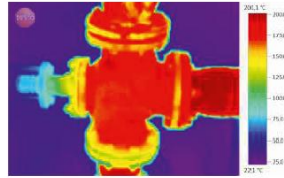
Electric steam  
boilers up to  
4500 kg/h,  
with optional  
reheater,  
series GE  
and GER





we are,

a company with a long tradition, young of mind, open to the new technologies and in constant evolution that offers a broad range of solutions from a single boiler supply to a complex turn-key installation always under the supervision and consulting of our highly skilled and qualified team.



Thermography



Qualified technical assistance



Documentation



our premises in Gerona.



We manufacture in Spain and export to a more than 60 counties abroad.